



PINNACLEHEALTH

The Renal Network, Inc.
ESRD Networks 4, 9 & 10

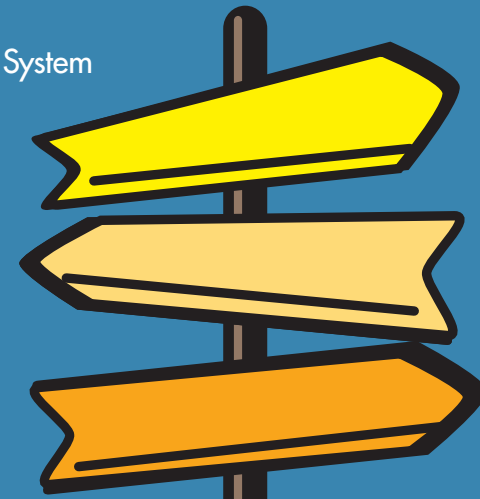
2011 Pinnacle Health Transplant System
and The Renal Network, Inc.
Quality Improvement Initiative

EXPLORE TRANSPLANT

Dialysis Provider Training

You should attend this training if you want to:

- Enhance your transplant knowledge.
- Gain experience delivering the Explore Transplant education program.
- Receive copies of the Explore Transplant education materials for dissemination to your patients
- Design a transplant education plan for your clinic that supports the new CMS CFC Transplantation Regulations



CE Credits Available!
 2011 Pinnacle Health Transplant System
 and The Renal Network, Inc.
 Quality Improvement Initiative
Thursday, October 27, 2011
 Pinnacle Health System at
 Harrisburg Hospital Campus
 - Brady Hall -
 Capital Suites Conference Room
 205 South Front Street
 Harrisburg, PA 17104

PO Box 8700
Harrisburg, PA 17105

PINNACLEHEALTH



2011 Pinnacle Health Transplant System and
The Renal Network, Inc. Quality Improvement Initiative

EXPLORE TRANSPLANT

Dialysis Provider Training



PINNACLEHEALTH

The Renal Network, Inc.
ESRD Networks 4, 9 & 10

Thursday, October 27, 2011
Harrisburg, PA

CE Credits Available

Questions?

Contact Rebecca Brown at
Pinnacle Health Transplant Services
Phone: (717) 231-8861
Email: rbrown@pinnaclehealth.org



DISTINGUISHED GUEST SPEAKERS



Amy D. Waterman, PhD, is an Assistant Professor of Medicine at Washington University School of Medicine in St. Louis, MO and the creator of the Explore Transplant Program. She conducts research about kidney patients' transplant decision-making and designs health education to help patients make informed transplant choices. She has surveyed more than 1,000 kidney donors and recipients in her career and has published many research articles about deceased and living donation. Amy has received the Quality-of-Care Award from NATCO, The Organization of Transplant Professionals, and a Telly Award in the Health and Wellness category for the Explore Transplant video. She currently serves as Vice Chair for the National OPTN/UNOS Living Donor Committee and on the American Society of Transplantation Organ Donation Advisory Council.



Christina Goalby, MSW, is the Education Manager for Dr. Waterman's research lab at Washington University School of Medicine and is co-creator of the Explore Transplant Dialysis Provider Training. She is a Nephrology Social Worker with over 12 years experience and was previously the Divisional Lead social worker for DaVita's Discovery Division serving the Midwest. Christina was awarded the Council of Nephrology Social Work Award from Region 3 by her peers in 2008 and is the Co-Chair of CNSW of Eastern MO & Metro East Chapter.

Transplant Center Experts, Representatives from Pinnacle Health System, Harrisburg Hospital Transplant Services in Harrisburg, PA.

**Guest Speakers are subject to change without notice.*

TARGET AUDIENCE

This educational program was designed for nephrology nurses, administrators, social workers, dietitians, technicians, and other renal health care professionals who:

- Provide kidney transplant education to patients and/or
- Wish to learn more about transplant as a treatment option for patients

TRAINING OBJECTIVES

- ⇒ To enhance dialysis providers' transplant knowledge & experience delivering transplant education to patients.
- ⇒ To assist providers in designing individualized transplant education plans that supports the CMS ESRD Conditions for Coverage regarding transplant.
- ⇒ To provide dialysis centers with Explore Transplant education materials for patients.
- ⇒ To strengthen relationships between transplant and dialysis centers to facilitate transplantation.

AGENDA

8:00 a.m.	Registration & Breakfast
8:45 a.m.	Welcome & Introductions
9:00 a.m.	In the Trenches
9:45 a.m.	Foundations of <i>Explore Transplant</i>
11:15 a.m.	Break
11:30 a.m.	Meeting 1: Exploring Transplant
12:30 p.m.	<i>Working Lunch</i> : Transplant Expert Panel Discussion
1:30 p.m.	Break
1:45 p.m.	Meetings 2 & 3: Kidney Recipients' Transplant Experiences & Living Donor's Donation Experiences
2:45 p.m.	Meeting 4: Deciding What to Do
3:30 p.m.	Best Practices: Developing Your Facilities' <i>Explore Transplant</i> Plan
4:00 p.m.	Adjourn

REGISTRATION INFORMATION

To Register, please **mail** the registration form included in this brochure with check or money order payable to: Pinnacle Health Transplant Services.

Mailing Address

Pinnacle Health System One Line
Attention: Nancy Cook
PO Box 8700,
Harrisburg, PA 17105

By fax: (717) 231-8985.
(for credit card payments only)

By phone: (717) 231-8900

PLEASE PRINT OR TYPE your information to ensure the accuracy of continuing education credits. If your facility is issuing a group/corporate check, please list all registered attendees on the check stub or an attachment.

- **Harrisburg Training Registration Deadline is October 18, 2011.**

Please Note: Attendees will not be registered until payment and registration form are received at Pinnacle Health System One Line.

- **Late registrations will only be accepted based on space availability. Late registration (after 10/18/11) fee will be \$45.00.**

CANCELLATION & NO-SHOW POLICIES

No refunds will be given for cancellations after October 18, 2011. Substitutions are welcome; however there will be no refunds for no-shows.

QUESTIONS

For questions regarding this event, please contact **Rebecca Brown** at Pinnacle Health Transplant Services at (717) 231-8861 or by email at rbrown@pinnaclehealth.org.

TRAINING LOCATION

Thursday, October 27, 2011

Pinnacle Health System at Harrisburg Hospital
Brady Hall
Capital Suites Conference Room
205 South Front Street
Harrisburg, PA 17104
Contact Phone: 717-231-8700

PARKING

Parking at the Harrisburg Hospital is available in the Brady Hall / Visitor parking garage. Space may be limited. **CAR POOLING IS STRONGLY ENCOURAGED!** Bring parking ticket into conference for validation.

MISCELLANEOUS / DRESS

Business casual. Meeting space environments vary. We suggest you bring a sweater or jacket to adjust in varying environments.



PINNACLEHEALTH

ACCREDITATION / CONTINUING EDUCATION

Nurses/Techs: This activity has been submitted to the American Nephrology Nurses' Association (ANNA) for approval to award 6.5 contact hours. The American Nephrology Nurses' Association (ANNA) is accredited as an approver of continuing nursing education by the American Nurses Credentialing Center's Commission on Accreditation.

Social Workers: This program has been submitted to the National Association of Social Workers for approval to award 6.5 continuing education contact hours.

Dietitians: This program has been submitted to the Commission on Dietetic Registration for approval to award 6.5 CPEUs.